

The background features a blue gradient with several circular gauges and arrows. One large gauge on the left has a scale from 140 to 260. Other smaller gauges and arrows are scattered across the scene, some with dashed lines and some with solid lines. The overall aesthetic is technical and futuristic.

CENTRE OF SUSTAINABLE INNOVATION

ICED RURAL 2024



TANIA ANDRIST – SOUTHEAST COLLEGE

INSPIRATION FOR THE CENTRE

- Community Vision
- Innovation Council
- Building a Community Economic Development Foundation



TELLING OUR STORY

Centre of Sustainable Innovation

- flexible program delivery and training
- applied research for the individual, entrepreneur, industry groups and post-secondary partners
- Entrepreneurship support



March 3, 2023 - First Innovation Conversation featuring Dr. Eric Grimson of MIT

 CENTRE OF SUSTAINABLE
INNOVATION

Transforming
Innovation for
Sustainability



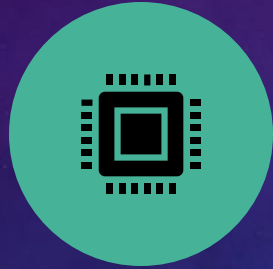


COMPUTER SCIENCE TRAINING THROUGH PROJECTS

MEETING THE GROWING DEMAND FOR TECHNICAL EXPERTISE



ADDRESSING
THE SKILL GAP



WHY COMPUTER
SCIENCE?



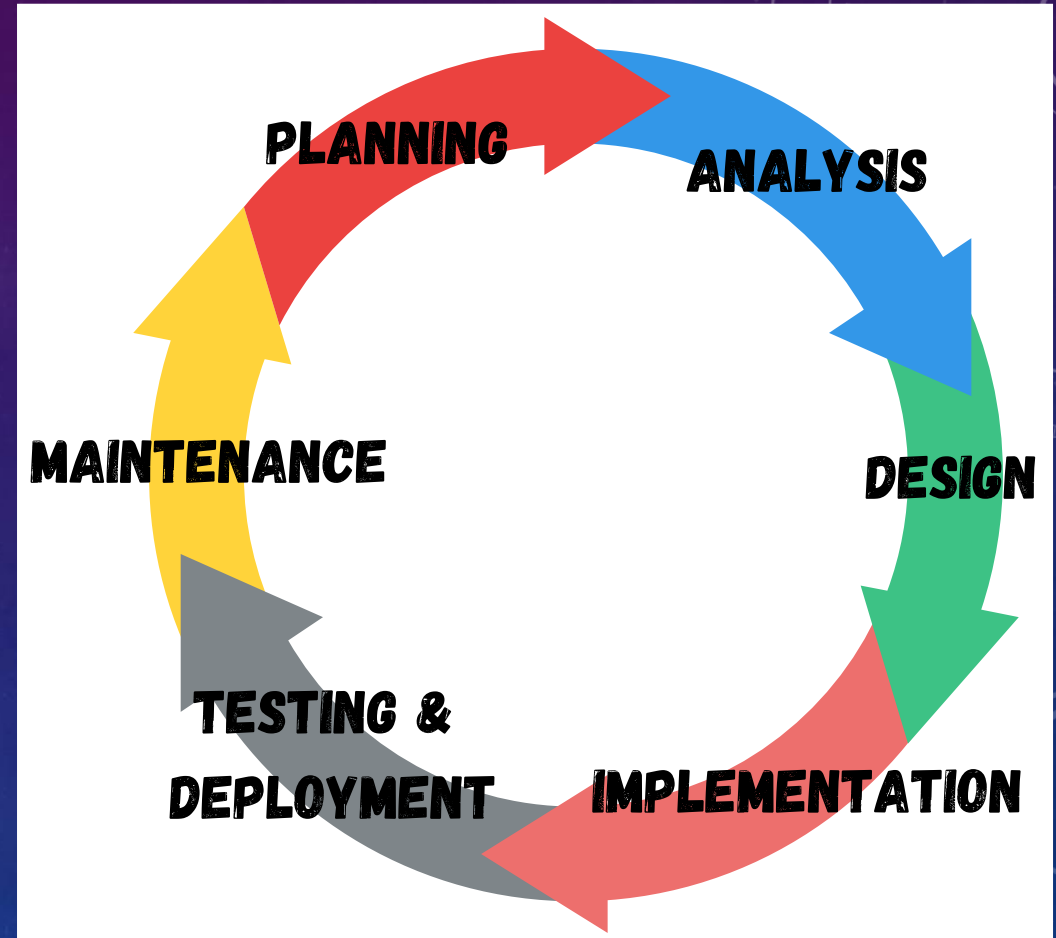
WHY HERE?



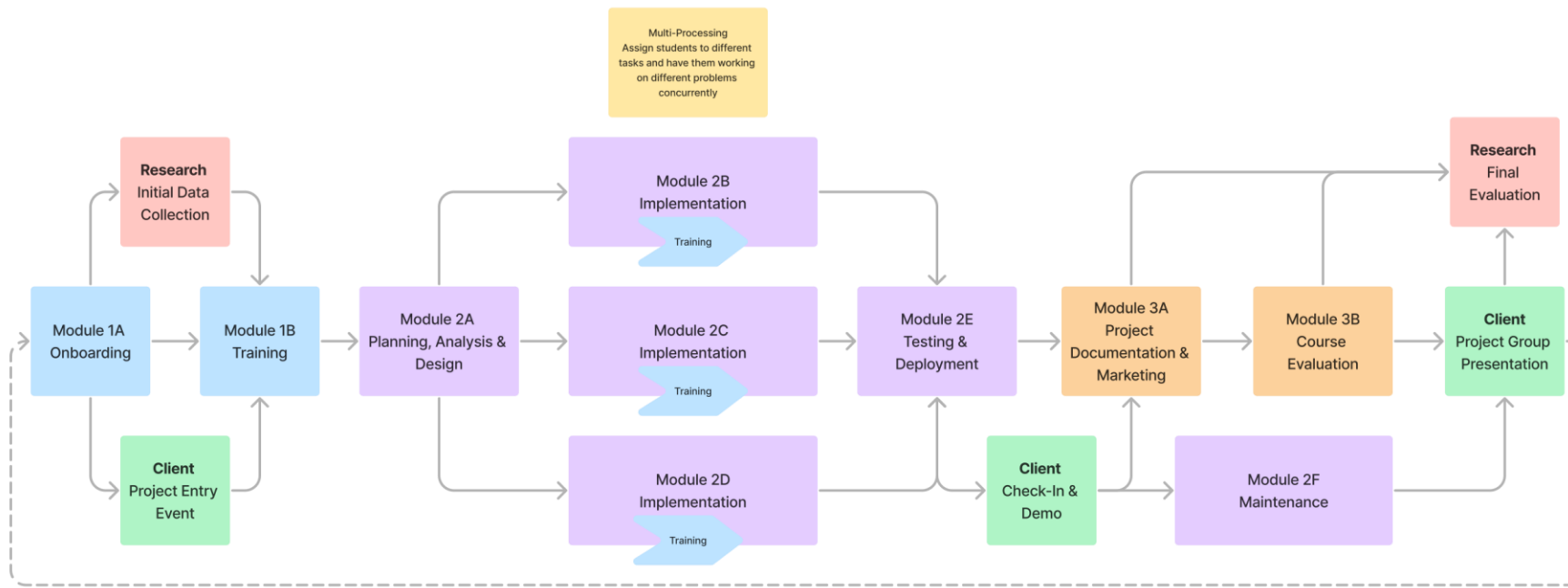
WHY PROJECTS?

COURSE STRUCTURE

- Project-Based Learning
- Partnerships
- Software Development Life Cycle
- Personalized Learning and Mentorship
- 21st Century Skills
- Applied Research



Computer Science Training Through Projects - Template



Week 1 & 2

Week 3 - 10

Week 11 - 14

BENEFITS

Benefits for the Students

- Real-world problems drive their learning objectives
- Gives them projects to showcase on their LinkedIn profile and resume.

Benefits for the Business

- Affordable and Innovative solutions to their problems.
- Train individuals in the technologies you're interested in.

Benefits to the Community

- Keep our intelligent and skilled individuals here in our community.
- Solve community and business problems.

REMOVING BARRIERS

- By partnering on projects and providing funding, businesses help us keep tuition low, ensuring that high-quality education remains accessible to more students, removing potential barriers.
- This partnership model supports the sustainability of our program and contributes to the long-term success of both the students and the local economy.

FUTURE GROWTH

- Expand the program to take on more projects.
- Increased focus on the applied research. Building an effective solution that meets your needs and has the data to back it up.
- Apply for grants to fund these projects, enabling us to hire students and provide them with paid research opportunities.
- Grants also allow us to invest in new technologies and tools, enhancing the quality of our education, research, and development capabilities.

NEXT COURSE OFFERING

September 24th to December 17th, 2024

Tuesdays 4:30pm – 8:30pm (Main class time)

Thursday 4:30pm – 8:30pm (Workshop Lab period)

Tuition: \$499 with a \$300 bursary upon completion of the course

*Interested in joining Computer Science Training Through Projects?
Check out our fall offering!*

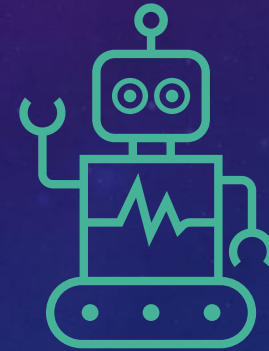
STUDENTS AND PROJECTS INTRODUCTION

WHO ARE WE?

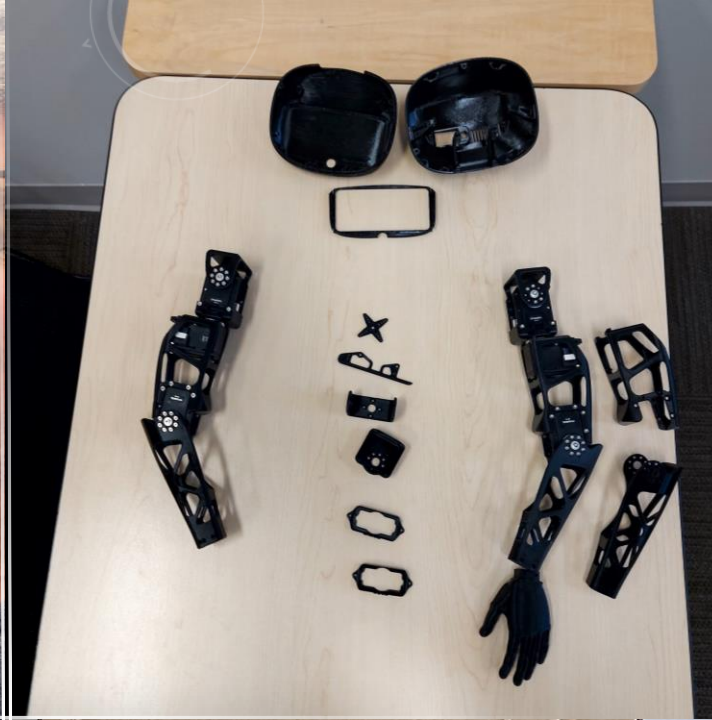
PROJECTS



Group Matchmaking Application



Poppy Robot



POPPY THE ROBOT

WHO IS POPPY?

- Poppy is a project the Southeast Techhub has been working on for some time now. She is a robot made with 3D printed parts, with the end goal being to have Poppy able to move around on her own. Throughout this course we have done some work on Poppy, although there is still a ways to go. Currently, Poppy is missing legs, hearing, vision, and a few other features. Poppy has introduced us to the worlds of production and robotics, and we would love to see her continue to grow!

GROUP MATCHMAKING APPLICATION

- *Built with:* React, Node, MongoDB
- *Functionality Overview:*
 - Scans LinkedIn profiles via QR code or manually enters user info.
 - Groups users using generative AI based on selected criteria.
 - Displays group assignments and table numbers for networking breakout sessions.

PROBLEM SOLVING AND CRITICAL THINKING

- Challenges We Encountered:
 - SessionStorage not available across devices
 - Inconsistent AI responses
 - Handling edge cases



TESTING WITH RBC

WHY PARTNER WITH US?

- Access to a skilled, motivated team of students and instructors eager to tackle your research and development challenges.
- Contribute to the local economy by investing in innovation and the next generation of professionals.
- Benefit from customized solutions that address your specific business needs.

GET INVOLVED

- We invite local businesses and organizations to bring us their research projects or product development ideas.
- Let's collaborate to turn your ideas into reality while supporting education and innovation in our community.

QUESTIONS?

